

FEBRUARY AUCTIONS

2
0
2
4



Girard Auction & Land Brokers, Inc.
(605) 267-2421
Toll Free: 1-866-531-6186



GIRARD
AUCTION & LAND BROKERS, INC.



PO Box 358, Wakonda, SD 57073
www.GirardAuction.com
www.GirardBid.com

LIVE FARM TOY AUCTION

4-WHEEL DRIVES • SMITH-MILLER TRUCKS • FARM TOYS • 1/64TH SCALE

Saturday February 3rd, 10:00 a.m. • Located: Girard Auction Facilities, Wakonda, SD

300+ Cataloged Lots! Lots of BIG TOYS! Highlights include:

•••• FARM TOYS ••••

Custom 4-wheel Drives: Jim Brown Wagner FWD WA-4 Open Station Singles—wow! Luke Clement Wagner WA-17 Yellow w/ Triples; Beneke Agrico 4+125 Singles; M. Fast Big Bud 525/50 Duals; Art Reed Massey-Ferguson 4900 Duals—1 of 3 made; MF 1800 w/ Singles.

Versatile: Buhler 2425 Duals—customized; 1150 Candy Stripe Triples—Dark & Light Tops; 500 Dark Top; D-100 Open Station; 1156 Lemon top; 825 Lemon Top C.E.; 895 Lemon Top; 935 Lemon top; 935 Duals '90 Boston; 936 Dark Top;; Fiat 44-23 Duals; Ford-Vers 1156 '90 Parts Mart; Ford-Vers 846 '91 Parts Mart.

Other 4-wheel Drives: COLORED CHROME MF 4840 1/32nd Scale '22 Toy Farmer; Big Bud 16V-747 900hp Signature Ed.; UH Big Bud HN-250 & HN-320; Oliver 2455 Cab & Wide Duals '13 PA FS; (2) MM A4T-1600 C.E. w/ C&D's; White Plainsman A4T-1400 C&D's Sign Ed.; Co-op Bearcat II 1 of 500 Ertl Club; Ford Prestige FW-60; Kinze Big Blue Twin-Engine; Kinze 1050 Grain Cart on duals; Steiger Cougar PTA-280; Steiger Panther "Wild about Steiger"; Steiger Panther CP-1400 duals; Steiger Panther PTA325 Duals; IH 4366 Duals '11 PA FS; IH Resin 7788 PA Farm Show; IH Red Resin 4166 Resin; CAT Challenger MT975B Duals '06 FPS; CAT Challenger #45 NZG; CAT Challenger MT765; Case 4994 Duals Dealer Ed.; NH 9384 '99 FS; NH T9060 Dealer Ed.; NH TJ480 Dealer Ed.; NH TJ530 Prestige; White 4-225 RS Singles; White 4-270 RS Duals.

JD: Trumm WA-17 C&D's; Trumm WA-14 Open Station; Trumm 8020 w/ Umbrella; (2) Trumm 8010's—one w/ duals; Key Prec. 7020; Prec. 8020 4wd; 9620R Prestige; 9620RX C.E.; 9200 wide triples; 8760 C.E.; Custom 7520's; Several 30-40-50-series 4wds; 4995 SP Mo-Co Ottumwa Employee; #6 Cornsheller on Cart; HO Scale Train Sets.

CaseIH: Pre. Engin. Steiger STX500 Ind. Orange; 9280 wide duals C.E.; 9380 Triples '95 Fargo; Quad-Trac '96 C.E.; Steiger 480 Duals Dealer Ed.; Steiger 535 HD Duals; Steiger 620 QT Red/Black 20th Anniv.; STX480 Triples Dealer Ed.; STX375 Singles; STX375 Duals; STX500 QT 50,000th Steiger; STX530 C.E.; 7140 FWA TTTs Magnum Demo.

AC: AgcoStar RED 8360 wide duals TTT's NIB—rare; AgcoStar Silver 8525 Triples '96 Louisville; Custom 7580 Black Belly Duals; Custom 8550 Black Belly Duals; 440 Singles '04 Dealer; Agco Gleaner S88 Combine Launch Ed.; 5050 FWA Orange Spec.; Orange & Yellow IB's—Orange Spec.; TratoMotive Loader Orange Spec.

1/64th & 1/32nd Scale: 1/64th Bronze/Chrome CaseIH 175th Anniv. Combine '17 Farm Show; 30+ Cases of Tractors, Implements, Trucks & Sets from a farm toy dealer retirement! All 10 to 20-year old, out of production pieces! Includes Kinze, JD, CaseIH, Steiger, New Holland & more! Several 1/64th 4wds; Also Several 1/32nd JD & CaseIH Farm Show Tractors & CAT Challengers.





••• TRUCKS & PRESSED STEEL •••

Smith Miller—Custom, Original & Restored Trucks:

B-Mack: Custom Tandem Axle Semi w/ Drop-Deck Semi & Beaver Tail; Custom Tandem Axle Semi w/ Large Lowboy Trailer; Custom Concrete Mixer; Platform Lumber Truck w/ Pup—original yellow; Tandem Axle Dump Truck—rp.

L-Mack: Custom Shell Oil Tanker w/ Pup—nice; Custom Tandem Axle Semi w/ Lowboy Trailer; Custom Boom-Lift Truck; 2-Tone Green Flatbed w/ Custom Wood Box; Custom Water Tanker (project); Cargo Liner Truck & Trailer; 2-tone Green Flatbed Lumber w/ pup; Blue Diamond Dump—original; Fire Ladder Truck; Log Truck w/ Load; West Coast Fast Freight Van—restored; Orange Flatbed w/ Load.

MIC: Custom Tandem Axle Semi w/ Belly Dump Trailer—nice; Custom Tandem Axle Semi w/ Flatbed & Pipe Load—nice; Custom Tandem Axle Semi w/ Log Trailer & Load; Semi w/ Fruehauf Lowboy Trailer; Stake Bed Truck w/ Lift Gate; Tandem Axle Dump; Wrecker—partially restored.

GMC Cabover: Van Semi—1-of-a-kind Private Label Certified Motor Trans of MN; Custom High-Rack Stake Truck; Custom Marathon Gas Tanker; Mobilgas Tanker; Semi w/ Fruehauf Trailers; PIE Semi; Silver Streak; Barrel truck; Dump Truck; Plastic Seed Delivery; Single Axle Dump; Single Axle Wrecker.

IH Cottonwood Acres R-190 Trucks: Tandem Axle Semi w/ Talbert Lowboy; Moss Towing Red Wrecker; Single Axle Grain Truck; Standard Oil Tanker.

All-American Trucks: Modern CATERPILLAR Tandem-axle Flatbed; Tandem Axle Galion Dump—original; Timber Toter—rp; Cargo Liner Semi; Custom Machinery Flatbed; Custom Log Truck w/ Pup; Custom Logger.

High-Detail Trucks: WHITE WC Red Stake—nice; Hwy 61 '41 JD Green Flatbed; Hwy 61 '46 GMC Wrecker—Goodyear Tires; Hwy 61 '75 Chevy Blue/White Grain Truck.

Vintage Trucks & Construction: Several original Doepke Construction Toys—Adam's Orange Grader, Barber Green Loader, CAT D-6, Euclid Dump, Heiliner Scraper, Unit Crane & Wooldridge Dump; Several Nylint Toys—Austin-Western Tele Crane, Hough Wheel Loader, Michigan Crane, Tournahaulers & more; Large Drudge Lumber Loader; Capri-Car Lumber Loader; Aluma-Toy & Marx Willy's Jeeps; Large customized Buddy L Mack Trucks; Several Wyandotte Trucks.

Terms: Cash, Good Check, Visa, MasterCard. 10% Buyer's Premium on all Internet, Absentee & Phone purchases. SD sales tax applies to onsite/instate bidders; Online buyer's may be subject to sales tax according Federal regulations.

Note: Wally Vance shipped his toys over 1,200 miles to Wakonda for this auction! Super collection of 4-wheel Drive Farm Tractors along with lots of nice trucks! If you like BIG TOYS, this auction is for you! We also included over 100 lots from a retired farm toy dealer!

Wally Vance of Red Deer, Alberta, Canada—Owner plus additional consignments.

Live, Online bidding available through www.GirardBid.com!
BID THERE WITHOUT BEING THERE!
 Full catalog and online bidding will open on or before January 22nd.

GIRARD
 AUCTION & LAND BROKERS, INC.
 (605) 267-2421
www.GirardAuction.com 2

SUPERBOWL SATURDAY LIVE FIREARMS AUCTION

300+ GUNS - RIFLES - SHOTGUNS - HANDGUNS - COMMEMORATIVES - SAFE
Saturday, February 10th at 10:00am • American Legion – 101 Montana St. – Wakonda, SD

Preview: Friday, Feb. 9th from 3pm-5pm & 8am the Morning of Auction



COMMEMORATIVES/SAFE: JOHN DEERE Gun Safe; Winchester John Wayne M.94 .32-40win, NIB; Winchester Chief Crazy Horse .38-55win, NIB; Browning BPS 12ga. DU Ed; Remington M.11-87 12ga. Premier Pheasants Forever; Henry "American Beauty" .22cal.

RIFLES: WINCHESTER – (3)M.94 (2).30-30 Win. .32WS; XPR 6.8 Western; M.70 Featherweight .264win; Wildcat .22LR; M.61 .22WinMag; (7)M.61 .22cal; M.69 .22cal; (2)M.72A .22cal; M.69A .22cal; M.77 .22LR; M.131 .22cal; M.62 .22cal; M.06 .22cal; **BROWNING** – BAR3 .300WinMag, NIB; A-Bolt .30-06 Whitetail Ed.; (6)X-Bolt White Gold Maple .25-06, .270, .300WinMag, .30-06, 6.5CM, .300WinMag, all NIB; X-Bolt White Gold .25-06, NIB; T-Bolt Maple Target .22LR; BLR Grey Laminate/Stainless .22LR; (2)BLR White Gold .300 WSM, .243; BLR Stainless .223; (2)BLR .243 Win; BL-22 .22cal; M.55 .22cal; **REMINGTON** – M.700LH BDL .270win, LEFT HANDED; (3)M.700BDL .270win, .223rem, 6mmRem; (3)M.700ADL .22-250, .270win, 7mmMag; (5)M.788 .22-250, (2) .222 Rem, (2)223 Rem; M.592M 5mm Mag; M.783 .30-06 Sprg.; M.742 .30-06 Sprg; M.121 .22RemSpl./WRF; M.521-T Junior Special .22cal Target; MoHawk 10C Nylon .22LR; Nylon 66 .22LR Mohawk Brown; M.341 .22cal; M.512-X .22cal; M.511-X .22cal; (3)M.16/16A .22 Rem Auto; M.12-B Gallery Spl. .22 Short; (2)M.12 .22cal; M.24 .22cal; M.121 .22cal; (2)M.241 .22LR; M.141 .35Rem; **RUGER** – M77 Mk.II .270win LEFT HANDED; M77 Mk.II .308win w/Skeleton Stock; All-Weather 77/22 .22LR w/Skeleton Stock; M77 Mk.II .270 Win; (2)Ranch Rifle .223; LC Carbine 5.7x28, NIB; (2)10/22 .22LR; **SAVAGE** – M.110 6.5 PRC Camo, NIB; (2)M.12FV .308Win, 6.5CM w/Custom Barrels; M.12 6.5CM; Axis 6.5CM, NIB; Axis 110 .30-06 Camo; M.93R17 .17HMR; M.340B .222; M.16 .308win; M.10 .223; M.99 .303; **MARLIN** – M.1895CB .45/70 Govt; M.1895 .45/70 Govt; M.25MNSS .22WMR; M.56 .22cal; (2)M.80 .22cal; "Tom-Mix" 100-S .22cal; M.100 .22cal; M.81-DL .22cal; **HENRY** – (2)Long Ranger Wildlife .243 Antelope, .223 Coyote, NIB; (2)Brass Wildlife 44mag, .30-30; Golden Boy .22Mag; Large Loop .22cal, NIB; H001 .22LR; M.H001V .17HMR; Golden Boy .22cal "Kjergard Sports"; Big Boy .357mag/.38Spl, NIB; **NORINCO** – ATD-22 .22LR, NIB; JW-15 .22LR; **MOSSBERG** – M.464 .30-30Win, NIB; M.146B .22cal; M.152 .22LR; M.151M .22LR; M.352KB .22cal; **OTHER** – Kimber 8400 .300 Win Mag; Rossi M.62 .22cal; SAKO S20 6.5CM, NIB; High Standard Sport King .22cal; CZ 527 Varmint .204 Ruger, NIB; BSA Martini .22LR; NEF HandiRifle SB2 .243win; Sears M.101.53521 .30/30; Hamilton No.027 .22cal Bicycle Gun; Ithaca M-49 .22cal; Whippet (2)M.C .22cal; Thompson/Center "22 Classic" .22LR; Colt "The Colteer" .22LR; JC Higgins M.103.228 .22cal.



SHOTGUNS: WINCHESTER – Diamond Grade M.101 Trap 12ga. Two-BBL Set w/Case; M.42 .410ga; M.12 12ga.; (2)M.50 20ga., 12ga; SXP 12ga., NIB; M.101 20ga. O/U; M.1897 12ga.; M.59 Win-Lite 12ga.; (3)M.37 .410ga, 20ga, 12ga; M.1300 12ga.; **BROWNING** – A5 Ultimate 12ga., Maple Stock, Engraved, Nice!; Citori Maple 12ga. O/U, NIB; A5 Maple 16ga., NIB; BT-99 12ga. Trap, NIB; A5 Light Twelve 12ga.; A5 12ga. Belgium, BPS 12ga; **REMINGTON** – (2)M.11-48 .410ga., 12ga.; (2)M.870 WM Mag 20ga, 12ga; (3)M.870 Express Mag 20ga; M.31 12ga.; M.11 12ga.; **BENELLI** – Ethos 28ga.; M1 Super 90 12ga; **BERETTA** – AL 391 Urika 2 12ga, Pheasant Forever, NIB; AL 391 Urika 12ga, NIB; **MOSSBERG** – Silver Reserve 12ga. O/U, NIB; M.500CG 20ga; M.500A Regal 12ga.; M.500A 12ga.; M.500A 12ga. SLUG; M.500C 20ga.; **ITHACA** – (2)M.37R Featherlight 16ga., 12ga; **STEVENS** – M.168 .410ga; 77D 12ga; M.94 Ser.M 12ga.; M.5100 16ga.; **STOEGER** – M3500 12ga. "Snow Goose", NIB; Condor 12ga O/U; Upland .410ga SxS; **CHARLES DALY** – Field Hunter 12ga. NIB; Field 20ga.; **SEARS** – M.101.1380 .410ga; M.66 12ga.; H&R – M.176 10ga.; Topper M48 12ga; **OTHER** – Savage M.67 Ser.C 12ga.; Astra Imperial 10ga. SxS; Ruger Red Label All-Weather 12ga. O/U; Franchi Affinity 3 Timber 12ga., Camo, NIB; EAA 12ga. Trap SS; Fabrique Nat. A5 Patent 16ga.; Sam Holt 12ga. Ex. Hammer SxS; Escort 20ga.; Eastern Arms 12ga.; Laurona M.85 12ga.; Springfield A5 Patent 12ga.; Westpoint M.948 16ga.; Jing An PH12-1 12ga.; Legacy (2)Pointer 12ga.; Marlin M.55 "Original Goose Gun" 12ga.; JC Higgins M.583.18 16ga.; SKB M7300 12ga.; Iver Johnson Champion 12ga.

COMBO: Stevens 22-410 .22LR/.410ga. O/U w/Tenite Stock; Savage 24-DC .22LR/22ga. O/U;

AR/TACTICAL: Springfield M1A National Match 6.5CM w/case; Ruger Precision .338 Lapua, NIB; Diamondback DB10 .308win; Citadel PAT 12ga.; Mossberg M.500 12ga.





MILITARY: **INTERNATIONAL HARVESTER** M1 Garand .30cal; **SPRINGFIELD** – (4)M1 Garand .30cal w/cases, one Expert Grade; 1898 .30-40Krag; **MAUSER** – Custom .22-250; M.98 .30-06; 1910 Amberg Kar.98; .300 Win Mag.

BLACKPOWDER/BB: Knight .45cal camo; Traditions Tracker .50cal; LG&Y Windsor 1862 Antique; Winchester 425 BB; Winchester 422 BB; Slavia 620 BB; Crosman 1400 BB; Italian .31cal Revolver.

PISTOLS: **COLT** – Gov Mdl. .22LR, NIB; Peacemaker .22LR, NIB; Commander Lightweight .45ACP, NIB; Defender Lightweight 9mm; Pre-Woodsman .22LR; S&W – M.5906 9mm; M.4006 .40S&W; **BERETTA** – 70S .380ACP; M.21A .22LR; U22 Neos .22LR, NIB; **RUGER** – Silver Eagle .22LR; LC9 9mm, NIB; SR22 .22LR w/Crimson Trace; **GLOCK** – 22 .40cal, NIB; 17 Gen 5 9mm, NIB; **SIG SAUER** – 1911 .45ACP; P938 9mm NIB; **OTHER** – Rock Island M1911 A1-FS .45ACP, NIB; Browning Buck Mark .22LR; Kel-Tec PMR-30 .22WMR; Girsan Regard MC 9mm Golf Finish; Taurus G2C 9mm, NIB; High Standard M-101 .22LR; Stevens Tip-Up .22cal; (2)FN 509 9mm; Springfield XDM-40 .40S&W; Baynard 7.65cal Belgium; FIE Mdl.D .38Spl. O/U Derringer; Walther PPK/S 9mm, NIB; H&K VP9 9mm Camo, NIB.

REVOLVERS: **COLT** – King Cobra .357mag Stainless, NIB; Python .357mag SNUB NOSE, NIB; **RUGER** – Bisley .22LR, NIB; New Mdl. Super Single Six .22cal; Bearcat .22cal; **H&R** – M.732 .32 S&W; M.632 .32 S&W; American .32 S&W; M.922 .22cal; “22 Special” .22LR; M.929 “Side-Kick” .22cal; **CHIAPPA** – Puma SAA 1873 12” Buntline .22cal, NIB; 1873 SSA-22; **OTHER** – S&W Governor .45LC/.410ga. NIB; Iver Johnson Top-Break .32 S&W; IJ Target Sealed 8 .22cal; EAA EA/R .38Spl./ .357Mag, NIB; Heritage Rough Rider Small Bore .22cal Betsy Ross Grips, NIB; J.S. Revolver Co. Top-Break .32 S&W; Taylor/Uberti 1873 .45 Colt.



AUCTIONEERS NOTE: This auction comes from consignors all over the Midwest! Everything from high end investment grade firearms to every day shooters! Great mix of new & old! Great assortment of high power Brownings all new in the box; along with tons of Remington & Winchester pump .22cal! Live In-House Bidding – No In-house Buyer's Premium – Internet, Absentee & Phone Bidding Available! Shipping of Firearms Available in the US. See a full list & catalog at www.GirardAuction.com!

Terms: Cash, Good Check, Visa, MasterCard. SD Sales tax applies. 10% buyer's premium on all Internet, Absentee, and Phone bids. Sales tax now charged to online buyers according to new federal guidelines. All Federal Firearms Regulations Apply.



FEBRUARY "CAMO & AMMO" ONLINE ONLY AUCTION

TONS of Reloading Equipment – Ammo of all Calibers & Gauges – Sporting Goods – Optics – BB Guns – Gun Cases – Memorabilia & More!

Ends WEDNESDAY, FEBRUARY 7th at 7:00 PM

All Items Located at Girard Auction Facilities – Wakonda, SD

Buy on Wednesday and come to the Gun Auction on Saturday to pick up!

Shipping Available on nearly all items! No Shipping on Primers or Powder – All Ammo Shipped UPS Only

Terms: 10% Buyer's Premium on all purchases. Sales tax applies to all purchases according to new federal regulations. Absentee Bids accepted. Register to Bid at www.GirardBid.com.

BOTH AUCTIONS ARE FULL – CONTACT MIKE TO CONSIGN TO A FUTURE FIREARMS AUCTION!



GIRARD
AUCTION & LAND BROKERS, INC.
(605) 267-2421
www.GirardAuction.com

VALENTINE'S DAY

ONLINE ONLY FARM TOY AUCTION

Wednesday February 14th, 7:00 p.m.



500+ Lots! Super clean collection with lots of variety! Good Clean Modern Toys, mix of vintage toys, lots of 1/64th & 1/32nd scale pieces too!



Full listing and catalog posted on GirardBid.com on or before February 5th! Bidding provided by www.GirardBid.com! Bid there without being there!



ONLINE ONLY AUCTION: At 7pm sharp on auction night, our software will change over to a live closing screen. 5-items will be on your screen at a time with a countdown clock on each item; if a bid is placed on that item in the last 40-seconds, it will reset the countdown clock back to 40-secs. Once an item sells, the next one in the catalog will move up and take its place.



Terms: 10% buyer's premium on all purchases. Sales tax may apply. Cash, Good Check, Visa & MasterCard accepted. Shipping available or pick up your items starting on Friday February 16th.



HUTCHINSON & BON HOMME COUNTY TILLABLE FARMLAND & ACREAGE WEST OF YANKTON, SD AT AUCTION

We will offer the following real estate at public auction at the Best Western Kelly Inn on Hwy 50 in Yankton on:

WEDNESDAY FEBRUARY 21ST 11:00 AM

TRACT # 1 38.72 ACRES HUTCHINSON COUNTY FARMLAND

This tract is located ½ mile south of Meridian Corner (Jct. of US Hwy 81 & US Hwy 18). It consists of 38.72 acres (+ / -) of unimproved farmland. The FSA Office reports that it has 37.82 acres tillable with a 68.2 soil productivity rating. The land is gently rolling and with a little work could be almost 100% tillable. The annual real estate taxes are \$682.30.

LEGAL: The NE ¼ of the SE ¼ of Section 11-97-56, Hutchinson County, South Dakota

TRACT # 2 39 ACRES BON HOMME COUNTY FARMLAND

This tract is located from Jct of Hwy 46 & Hwy 25 south of Scotland, SD, go 1 mile south, 2 miles west & ½ north on the west side of the road. It consists of 39 acres (+ / -) of unimproved farmland. The FSA Office indicates that it is all tillable with a powerful soil productivity rating of 81.6! This is a nearly level tract that is highly productive. The annual real estate taxes are \$810.34.

LEGAL: The NE ¼ of the SE ¼ of Section 1-95-59, Bon Homme County, South Dakota

TRACT # 3 20.40 ACRES BON HOMME COUNTY FARMLAND

This tract is located 1 ¼ miles west of Tabor SD on Hwy 50. This tract consists of 20.40 acres of unimproved farmland. The FSA Office indicates that it has 19.61 acres tillable with a soil productivity index rating of 82! This is a level tract of highly productive farmland. This would also be a good location for a new home or Business right along Hwy 50. The annual real estate taxes are \$503.38.

LEGAL: Albert A. Mudloff Jr. Tract # 4 in the SW ¼ less Road Right of Way in Section 15-94-58, Bon Homme County, South Dakota

TRACT # 4 38.37 ACRES UNIMPROVED BON HOMME COUNTY FARMLAND

This tract is located 1 mile west of Tabor SD on Hwy 50. This tract consists of 38.37 acres (+ / -) of unimproved farmland. The FSA Office reports that it is all tillable and has a soil productivity index rating of 82! This is a level tract of land with great access and lots of possibilities off Hwy 50. The annual real estate taxes are \$946.80.

LEGAL: The East 1040' of Albert A. Mudloff Jr. Tract # 1 (Part A) in the SW ¼ of Section 15-94-58, Bon Homme County, South Dakota

TRACT # 5 IMPROVED ACREAGE w/8.2 ACRES JUST 3 MILES WEST OF YANKTON!

This tract is located at 30938 436th Ave. Yankton, SD or from Walmart go 4 miles west on Hwy 50 & ½ mile south on 436th Ave. This tract consists of 8.36 acres with an older 1.5 story home, detached garage, and livestock barn. This is a great setup for horse and livestock enthusiasts and would also be an excellent location for a new home. The acreage has a fantastic location with the southern border adjacent to Hwy 314 and the northern border just a ½ mile off Hwy 50. Come take a look! The possibilities are endless! The annual real estate taxes are \$503.38.

To view the property: Ryan Wieman 605-366-3369 or Justin Cap 605-760-1086 for a private showing.

LEGAL: Lots 1, 2, & 3, Ranch 1, Ranch Estates, Yankton County, South Dakota

AUCTION TERMS: Cash sale with 10% nonrefundable downpayment the day of sale and the balance on April 5, 2024. A Warranty Deed or Trustee's Deed will be provided. Closing Fee and Owner's Title Insurance will be split 50/50 between buyer and seller. Seller will pay all the 2023 RE taxes due in 2024. Full possession granted upon final settlement. Buyers will get to farm the land for the 2024 crop year! All property sold in AS-IS Condition and subject to confirmation by the owners. For more information and buyer's info packet, visit our website at www.wiemanauktion.com or call 800-251-3111 and our office will send one to you. - MARQUARDT FAMILY, OWNERS

Wieman Land & Auction Co., Inc.
www.wiemanauktion.com

Partnering
with

Girard Auction & Land Brokers, Inc.
www.girardauktion.com

WINTER SIGN & ADVERTISING ONLINE ONLY AUCTION

Monday February 19th, 7:00 P.M.

All items are located at the Girard Auction Facility, Wakonda, SD

400+ Lots of Signs, Advertising & Antiques!
 Nearly all the items in this auction came from a single "Sign Hoarders" collection!

Photos are a small sampling of what to expect!

Online Only Auction: At 7pm sharp on auction night, our website will change over to a LIVE CLOSING SCREEN. 5-items will be on your screen at a time; each of those items will have a count-down clock. If a bid is placed on an item with less than 40-secs to go, it will reset the countdown clock on that item back to 40-secs. Once that item hits ZERO, the next item in the auction will take its place.

Terms: 10% Buyer's Premium on all items. Sales tax applies. Absentee bids accepted too. Shipping Available on smaller signs pickup recommended for large items or quantity buyers! \$1 opening bid, no minimum or reserve! No Live Auction—Online Only!

Minneapolis-Moline Memorabilia & Literature

ONLINE ONLY AUCTION

The Alan & Linda Goodwin Collection

Wednesday February 28th, 7:00 p.m. • Located: Online Only from Wakonda, SD

In the Fall of 2022, we sold Alan & Linda's fantastic collection of M-M Signs, Toys & larger memorabilia; well now we are back with their small stuff! Super collection of trinkets, jewelry, cans, literature, manuals, postcards, trade cards & more! 300+ Lots!



Full listing and catalog posted on GirardBid.com on or before February 15th!
Bidding provided by www.GirardBid.com!

ONLINE ONLY AUCTION: At 7pm sharp on auction night, our software will change over to a live closing screen. 5-items will be on your screen at a time with a countdown clock on each item; if a bid is placed on that item in the last 40-seconds, it will reset the countdown clock back to 40-secs. Once an item sells, the next one in the catalog will move up and take its place.



Terms: 10% buyer's premium on all purchases. Sales tax may apply. Cash, Good Check, Visa & MasterCard accepted. Shipping available or pick up your items starting on Friday February 16th.



The Merle Johnson Estate Toy Auction #4

IH Trucks, White COE Trucks, Tru-Scale Farm Toys, IH Scouts & More!

Saturday February 24th, 10:00 a.m. • Located: Girard Auction Facilities, Wakonda, SD

300+ Cataloged lots of some of the rarest & best trucks in the hobby! Condition & Rarity are high!



Several New in the Box IH Loadstar & Fleetstar Trucks! Includes a super rare Stake Truck w/ Minneapolis-Moline Tractor Farm Set! Also, a rare Concrete Mixer from the Fred Ertl Jr. Collection! Several unusual color combination original trucks without boxes too!



Super collection of Tru-Scale & Eska Trucks!
New In the Box, Mint, Rare Colors & Variations!
Several nice trucks without boxes too!



Remarkable set of International Harvester Scouts—all generations! Several we have never seen or sold before!



Complete collection of Ertl WHITE Tilt-Cab Trucks—all Mint in the box!
50+ Pieces of New in the Box Tru-Scale Farm Toys!



Great line-up of 1950's plastic trucks by Product Miniatures! Unusual colors and variations!
Plus IH Metro Vans, Astro Trucks, Custom Trucks by CWA & Brunswick & others!



Photos are a small sampling of what to expect! If you collect IH Trucks, this is an auction of a lifetime! Live, Online bidding available through www.GirardBid.com. Full catalog & bidding will open on or before February 5th.

Terms: 10% Buyer's Premium on all Internet, Absentee, & Phone bids. No onsite buyer's premium with cash or check payment. SD sales tax applies to all onsite & instate bidders; Sales tax may be charged to online buyers according to new Federal Guidelines.

Note: With all the different categories in toy collecting, Merle would have told you this was some of his most favorite and the hardest pieces to obtain! It literally took 40+ years of searching to come up with this collection!

Merle Johnson Estate & Sandy Johnson of Jackson, MN—Owner

GIRARD
 AUCTION & LAND BROKERS, INC.
 (605) 267-2421
www.GirardAuction.com¹⁰

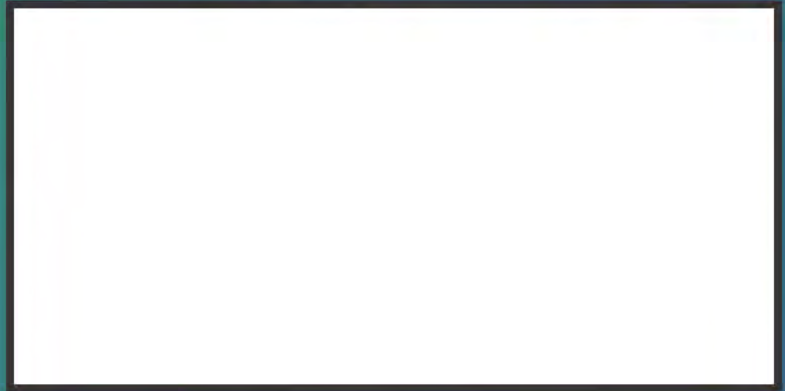
GIRARD
AUCTION & LAND BROKERS, INC.

NAA
Auctioneer
South Dakota
5
AUCTIONEERS
Association

PO Box 358
Wakonda, SD 57073



First Class Mail

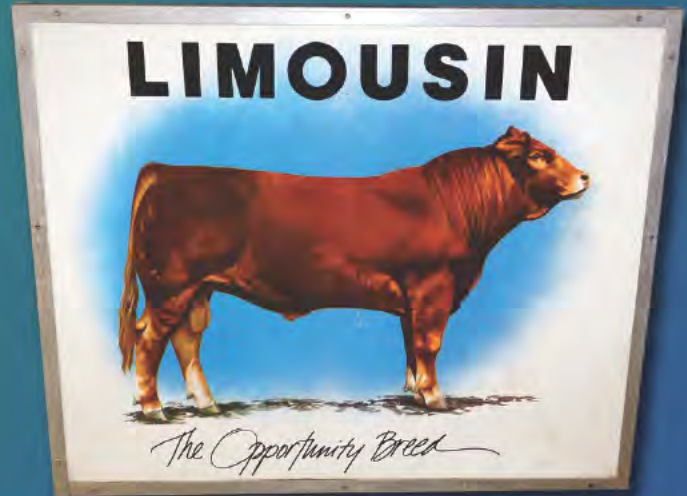


We Sell LAND

Now booking Spring Farmland Auctions, the market is strong for all size tracts and qualities of Farmland!

Supply & Demand—the auction method is the only way to sell!

Call today to get your LAND auction scheduled.



With as many auctions as we have coming up this winter, we are bound to hit some bad weather days. If the weather looks at all questionable for travel, please check our website prior to leaving or call our toll free number and we will have a recorded message if we are or are not going to conduct the auction. We will update our website and facebook page as soon as we know of a postponement or cancellation. Travel safe and we hope to see you at the next auction!

THANK YOU FOR SHARING THIS BROCHURE WITH A FRIEND OR PASSING ALONG TO AN INTERESTED PARTY.