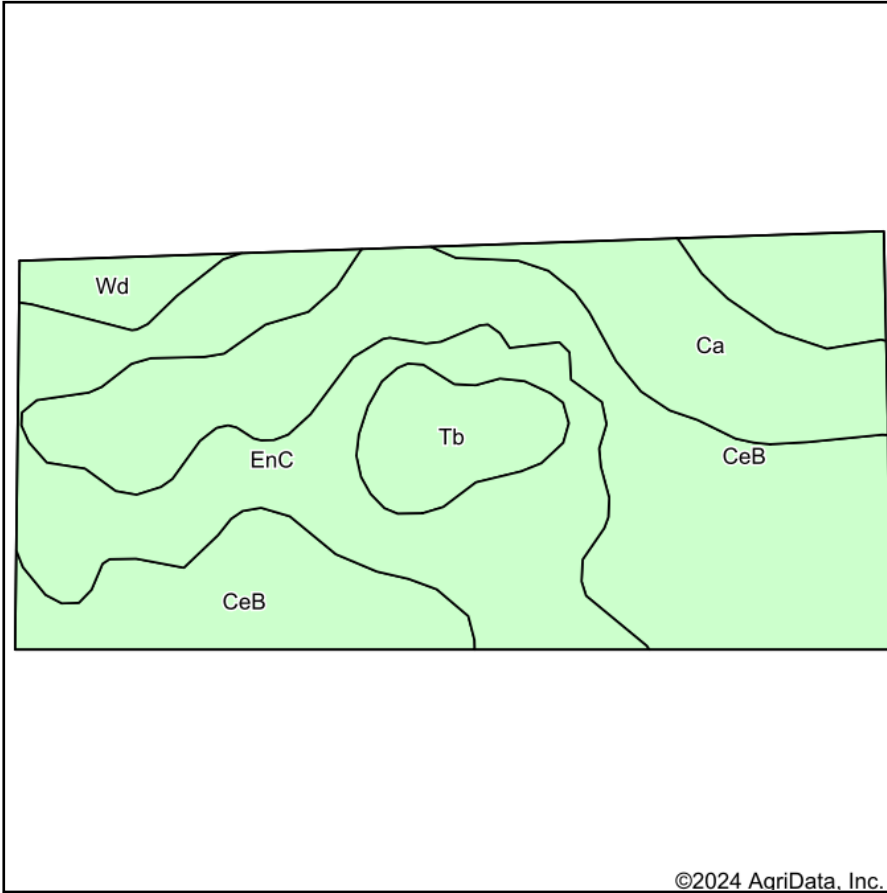
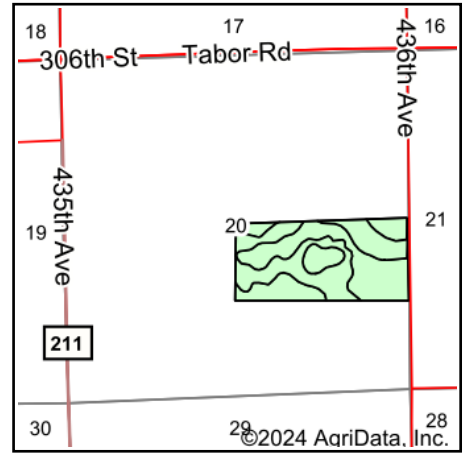


# Soils Map



Soils data provided by USDA and NRCS.



State: **South Dakota**  
 County: **Yankton**  
 Location: **20-94N-56W**  
 Township: **Utica**  
 Acres: **75.7**  
 Date: **4/15/2024**

Maps Provided By:  
  
 CUSTOMIZED ONLINE MAPPING  
 © AgriData, Inc. 2023 [www.AgriDataInc.com](http://www.AgriDataInc.com)



Area Symbol: SD135, Soil Area Version: 25

Code	Soil Description	Acres	Percent of field	PI Legend	Non-Irr Class *c	Productivity Index	*n NCCPI Soybeans	
CeB	Clarno-Bonilla loams, 1 to 6 percent slopes	37.76	49.9%		Ile	84	64	
EnC	Clarno-Ethan-Bonilla loams, 2 to 9 percent slopes	22.40	29.6%		IIIle	69	61	
Ca	Chancellor silty clay loam, 0 to 2 percent slopes, frequently flooded	8.63	11.4%		IIw	81	62	
Tb	Tetonka silt loam, 0 to 1 percent slopes	4.70	6.2%		IVw	56	14	
Wd	Worthing silty clay loam, 0 to 1 percent slopes	2.21	2.9%		Vw	30	4	
<b>Weighted Average</b>						<b>2.51</b>	<b>75.9</b>	<b>*n 58</b>

\*n: The aggregation method is "Weighted Average using all components"

\*c: Using Capabilities Class Dominant Condition Aggregation Method